

## MDW, MDW...M - vývodky kovové PG a M

**Materiál:**

telo: poniklovaná mosadz;  
tesnenie: neoprén CR;  
bezhalogénové prevedenie

**Pracovná teplota:**

od -40°C do +100°C

**Stupeň ochrany:**

IP54

**Norma:**

EN 62444, typ A

PG

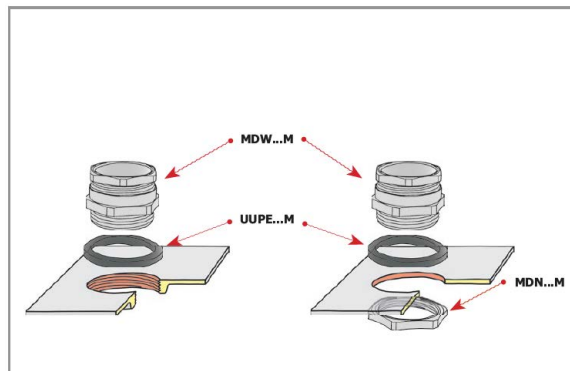
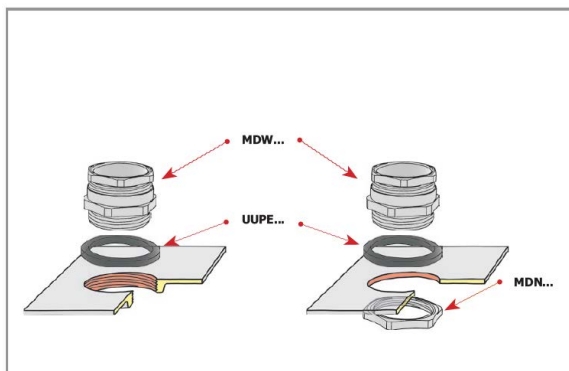
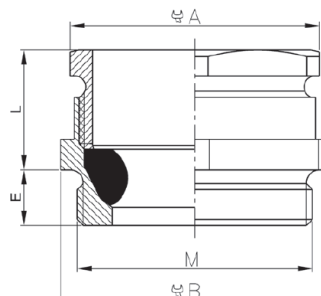
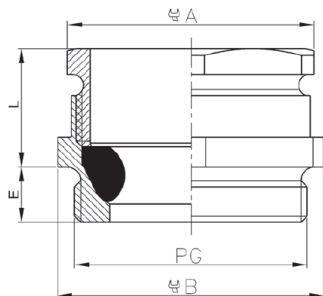
M



Tovar  
na objednávku

TYP	Závit PG / M	Vonkajší priemer kábla	Rozmery (mm)		Rozmer kľúča (mm)		Balenie (ks)	Číslo produktu
			L	E	A	B		
MDW-7	P7	3,5 - 6,0	9,5	4	13	14	10	3.0400601
MDW-9	P9	5,5 - 8,7	11,5	5	16	17	10	3.0400602
MDW-11	P11	7,5 - 10,5	12,5	6	19	20	10	3.0400603
MDW-13	P13,5	10,5 - 13,5	12,0	6	20	22	10	3.0400604
MDW-16	P16	12,0 - 15,0	12,5	6	22	24	10	3.0400605
MDW-21	P21	15,0 - 19,0	15,5	7	28	30	10	3.0400606
MDW-29	P29	18,0 - 25,0	17,0	8	37	40	10	3.0400607
MDW-36	P36	23,5 - 32,0	19,0	8	47	50	10	3.0400608
MDW-42	P42	30,0 - 38,0	19,0	10	54	58	1	3.0400609
MDW-48	P48	34,0 - 42,5	20,0	10	80	64	1	3.0400610
MDW-12M	M12x1,5	3,5 - 6,5	11,0	5	12	14	10	3.0400611
MDW-16M	M16x1,5	6,5 - 9,5	13,0	6	16	18	10	3.0400612
MDW-20M	M20x1,5	8,5 - 13,0	14,0	6	20	22	10	3.0400613
MDW-25M	M25x1,5	12,0 - 17,0	16,0	7	25	27	10	3.0400614
MDW-32M	M32x1,5	15,0 - 22,0	20,0	8	32	35	10	3.0400615
MDW-40M	M40x1,5	19,5 - 28,0	23,0	8	40	44	10	3.0400616
MDW-50M	M50x1,5	26,0 - 36,0	27,0	9	50	54	1	3.0400617
MDW-63M	M63x1,5	33,0 - 46,0	32,0	10	63	67	1	3.0400618

Vývodka sa dodáva bez matice (MDN) a bez tesnenia (UUPE).



Na objednávku dodávame k vývodkám aj redukcie, adaptéry a záslepky.