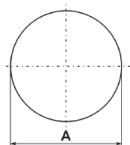
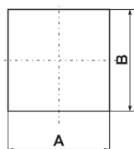


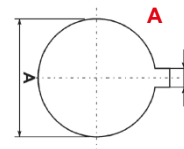
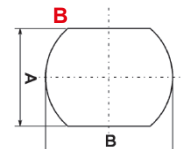
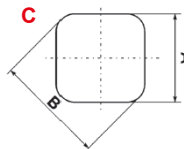
Hydraulické dierovacie náradie



NWY...



SY...



WKY...

Dierovače NWY>37,4; SY a WKY sa dodávajú spoločne s pastou na závit Molykote.

TYP	Rozmer (mm)		Závit PG	Závit M	Otvor pre trň (mm)	Trň	Číslo produktu
	A	B					
NWY-12,2/M12	12,2	-	-	M12x1,5	10-10,5	3/8"UNF-63	5.0248080
NWY-15,4/PG9	15,4	-	PG9	-	10-10,5	3/8"UNF-63	5.0248090
NWY-16,2/M16	16,2	-	-	M16x1,5	10-10,5	3/8"UNF-63	5.0248100
NWY-18,8/PG11	18,8	-	PG11	-	10-10,5	3/8"UNF-63	5.0248120
NWY-20,7/PG13/M20	20,7	-	PG13	M20x1,5	10-10,5	3/8"UNF-63	5.0248130
NWY-22,8/PG16	22,8	-	PG16	-	10-10,5	3/8"UNF-63	5.0248140
NWY-25,5/M25	25,5	-	-	M25x1,5	10-10,5	3/8"UNF-63	5.0248150
NWY-28,6/PG21	28,6	-	PG21	-	10-10,5	3/8"UNF-63	5.0248160
NWY-30,5/M30	30,5	-	-	M30x1,5	10-10,5	3/8"UNF-63	5.0248170
NWY-32,5/M32	32,5	-	-	M32x1,5	10-10,5	3/8"UNF-63	5.0248180
NWY-37,4/PG29	27,4	-	PG29	-	19,5-20	3/4"UNF-85	5.0248190
NWY-40,5/M40	40,5	-	-	M40x1,5	19,5-20	3/4"UNF-85	5.0248200
NWY-47,5/PG36	47,5	-	PG36	-	19,5-20	3/4"UNF-85	5.0248210
NWY-50,5/M50	50,5	-	-	M50x1,5	19,5-20	3/4"UNF-85	5.0248220
NWY-54,5/PG42	54,5	-	PG42	-	19,5-20	3/4"UNF-85	5.0248230
NWY-59,8/PG48	59,8	-	PG48	-	19,5-20	3/4"UNF-85	5.0248250
NWY-63,5/M63	63,5	-	-	M63x1,5	19,5-20	3/4"UNF-85	5.0248270
SY1-30	30	30			20,5-21	3/4"/M20x1,5-145	5.0248620
SY1-45	45	45			20,5-21	3/4"/M20x1,5-145	5.0248630
SY1-54	56,4	54			20,5-21	3/4"/M20x1,5-145	5.0248650
SY1-68	68	68			20,5-21	3/4"/M20x1,5-165	5.0248670
SY2-92	92	92			20,5-21	3/4"/M20x1,5-165	5.0248700
SY-22x68	22	68			10,5-11	3/8"/M10x1-165	5.0248710
SY-22,2x45	22,2	45			10,5-11	3/8"/M10x1-165	5.0248715
SY2-45x92	45	92			20,5-21	3/4"/M20x1,5-165	5.0248760
WKY-22,5/A	22,5	3,0			10,5-11	3/8"/M10-96	5.0248850
WKY-30,5/A	30,5	3,0			16,5-17	3/4"/M16-120	5.0248851
WKY-22,5/B	18,5	22,5			10,5-11	3/8"/M10-96	5.0248860
WKY-22,5/C	20,1	22,5			10,5-11	3/8"/M10-96	5.0248870