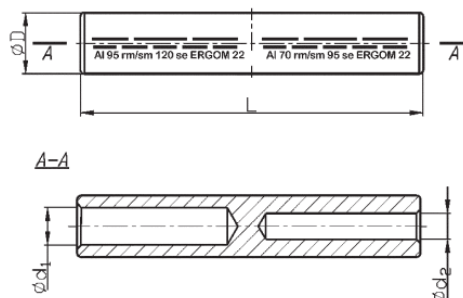


# Al koncovky

## LAP.../■■■ - spojka rúrková s prep., redučná

**Materiál:** Al  
**Povrchová úprava:** nepocínované



TYP	Prierez $d_1$ (mm <sup>2</sup> )		Prierez $d_2$ (mm <sup>2</sup> )		Rozmery (mm)				Počet lisov		Číslo hniezda	Balenie (ks)	Číslo produktu
	rm/sm	re/se	rm/sm	re/se	$d_1$	$d_2$	D	L	úzke	široké			
LAP 25/16	25	35	16	25	6,8	5,6	12,0	75	4-4	2-2	12	10	4.0227600
LAP 35/16	35	50	16	25	8,0	5,6	14,0	90	5-4	2-2	14	10	4.0227610
LAP 35/25	35	50	25	35	8,0	6,8	14,0	90	5-4	2-2	14	10	4.0227620
LAP 50/25	50	70	25	35	9,8	6,8	16,0	90	5-4	2-2	16	10	4.0227630
LAP 50/35	50	70	35	50	9,8	8,0	16,0	90	5-4	2-2	16	10	4.0227640
LAP 70/25	70	95	25	35	11,2	6,8	18,5	110	6-4	3-2	18	10	4.0227645
LAP 70/35	70	95	35	50	11,2	8,0	18,5	110	6-5	3-2	18	10	4.0227650
LAP 70/50	70	95	50	70	11,2	9,8	18,5	110	6-5	3-2	18	10	4.0227660
LAP 95/35	95	120	35	50	13,2	8,0	22,0	110	6-5	3-2	22	10	4.0227670
LAP 95/50	95	120	50	70	13,2	9,8	22,0	110	6-5	3-2	22	10	4.0227680
LAP 95/70	95	120	70	95	13,2	11,2	22,0	110	6-6	3-3	22	10	4.0227690
LAP 120/35	120	150	35	50	14,7	8,0	23,0	110	6-6	3-2	22	10	4.0227700
LAP 120/50	120	150	50	70	14,7	9,8	23,0	110	6-6	3-2	22	10	4.0227710
LAP 120/70	120	150	70	95	14,7	11,2	23,0	110	6-6	3-3	22	10	4.0227720
LAP 120/95	120	150	95	120	14,7	13,2	23,0	110	6-6	3-3	22	10	4.0227730
LAP 150/35	150	185	35	35	16,3	8,0	25,0	130	6-6	3-2	25	10	4.0227740
LAP 150/50	150	185	50	50	16,3	9,8	25,0	130	6-6	3-2	25	10	4.0227750
LAP 150/70	150	185	70	70	16,3	11,2	25,0	130	6-6	3-2	25	10	4.0227760
LAP 150/95	150	185	95	95	16,3	13,2	25,0	130	6-6	3-3	25	10	4.0227770
LAP 150/120	150	185	120	120	16,3	14,7	25,0	130	6-6	3-3	25	10	4.0227780
LAP 185/120	185	240	120	150	18,3	14,7	28,5	130	7-7	3-3	28	10	4.0227790
LAP 185/150	185	240	150	185	18,3	16,3	28,5	130	7-7	3-3	28	10	4.0227780
LAP 240/120	240	300	120	150	21,0	14,7	32,0	150	8-8	3-3	32	10	4.0227805
LAP 240/150	240	300	150	185	21,0	16,3	32,0	150	8-8	3-3	32	10	4.0227810
LAP 240/185	240	300	185	240	21,0	18,3	32,0	150	8-8	3-3	32	10	4.0227820

Koncovky sú plnené kontaktnou vazelínou. Sektorové vodiče musia byť preformátované na kruhové.