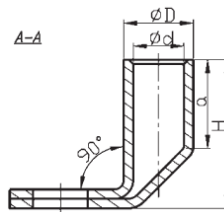
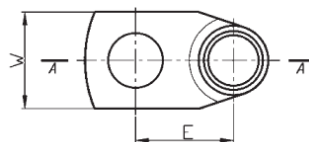


# Cu KONCOVKY RÚRKOVÉ - DIN

## K90D - oko rúrkové, DIN, vyhnuté 90°

Materiál: Cu  
 Povrchová úprava: pocínované  
 Prevedenie: DIN 46235 (lisov. časť)



Tovar  
na objednávku

TYP	Prierez (mm <sup>2</sup> )	Otvor pre skrutku	Rozmery (mm)						Počet lisov		Číslo hniezda	Balenie (ks)	Číslo produktu
			d	D	a	E	W	H	úzke	široké			
K90D 10/5	10	M5	4,5	6,0	10	13	10	14	1	-	6	10	4.0214202
K90D 10/6	10	M6	4,5	6,0	10	13	10	14	1	-	6	10	4.0214212
K90D 10/8	10	M8	4,5	6,0	10	16	12	14	1	-	6	10	4.0214222
K90D 16/6	16	M6	5,5	8,5	20	12	13	14	2	1	8	10	4.0214252
K90D 16/8	16	M8	5,5	8,5	20	12	13	25	2	1	8	10	4.0214262
K90D 16/10	16	M10	5,5	8,5	20	15	17	25	2	1	8	10	4.0214272
K90D 16/12	16	M12	5,5	8,5	20	17	18	25	2	1	8	10	4.0214282
K90D 25/6	25	M6	7,0	10,0	20	15	14	26	2	1	10	10	4.0214292
K90D 25/8	25	M8	7,0	10,0	20	18	16	26	2	1	10	10	4.0214302
K90D 25/10	25	M10	7,0	10,0	20	20	17	26	2	1	10	10	4.0214312
K90D 25/12	25	M12	7,0	10,0	20	20	19	26	2	1	10	10	4.0214322
K90D 35/8	35	M8	8,2	12,5	20	19	17	27	2	1	12	10	4.0214342
K90D 35/10	35	M10	8,2	12,5	20	21	19	27	2	1	12	10	4.0214352
K90D 35/12	35	M12	8,2	12,5	20	21	21	27	2	1	12	10	4.0214362
K90D 50/8	50	M8	10,0	14,5	28	20	22	36	3	2	14	10	4.0214382
K90D 50/10	50	M10	10,0	14,5	28	22	22	36	3	2	14	10	4.0214392
K90D 50/12	50	M12	10,0	14,5	28	22	24	36	3	2	14	10	4.0214402
K90D 50/16	50	M16	10,0	14,5	28	28	28	36	3	2	14	10	4.0214412
K90D 70/8	70	M8	11,5	16,5	28	21	24	37	3	2	16	10	4.0214432
K90D 70/10	70	M10	11,5	16,5	28	23	24	37	3	2	16	10	4.0214442
K90D 70/12	70	M12	11,5	16,5	28	23	24	37	3	2	16	10	4.0214452
K90D 70/16	70	M16	11,5	16,5	28	26	30	37	3	2	16	10	4.0214462
K90D 95/10	95	M10	13,5	19,0	35	25	28	45	4	2	18	10	4.0214482
K90D 95/12	95	M12	13,5	19,0	35	26	28	45	4	2	18	10	4.0214492
K90D 95/16	95	M16	13,5	19,0	35	30	32	45	4	2	18	10	4.0214502
K90D 95/20	95	M20	13,5	19,0	35	32	32	45	4	2	18	10	4.0214512
K90D 120/10	120	M10	15,5	21,0	35	27	32	47	4	2	20	10	4.0214522
K90D 120/12	120	M12	15,5	21,0	35	28	32	47	4	2	20	10	4.0214532
K90D 120/16	120	M16	15,5	21,0	35	32	32	47	4	2	20	10	4.0214542
K90D 120/20	120	M20	15,5	21,0	35	34	38	47	4	2	20	10	4.0214552
K90D 150/10	150	M10	17,0	23,5	35	29	34	48	4	2	22	10	4.0214562
K90D 150/12	150	M12	17,0	23,5	35	30	34	48	4	2	22	10	4.0214572
K90D 150/16	150	M16	17,0	23,5	35	34	34	48	4	2	22	10	4.0214582
K90D 150/20	150	M20	17,0	23,5	35	36	38	48	4	2	22	10	4.0214592
K90D 185/12	185	M12	19,0	25,5	40	35	37	55	5	2	25	10	4.0214602
K90D 185/16	185	M16	19,0	25,5	40	35	37	55	5	2	25	10	4.0214612
K90D 185/20	185	M20	19,0	25,5	40	37	40	55	5	2	25	10	4.0214622
K90D 240/12	240	M12	21,5	29,0	40	37	42	57	-	2	28	10	4.0214632
K90D 240/16	240	M16	21,5	29,0	40	37	42	57	-	2	28	10	4.0214642
K90D 240/20	240	M20	21,5	29,0	40	39	45	57	-	2	28	10	4.0214652
K90D 300/16	300	M16	24,5	32,0	40	38	48	67	-	2	32	10	4.0214672
K90D 300/20	300	M20	24,5	32,0	40	40	48	67	-	2	32	10	4.0214682

Sektorové vodiče musia byť preformátované na kruhové.