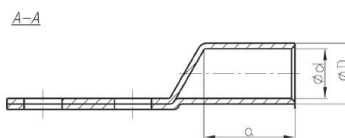
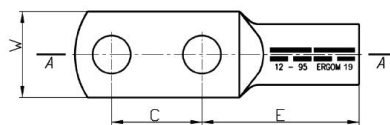


Cu KONCOVKY RÚRKOVÉ - DIN

KDR...2x - oko rúrkové, DIN, dvojdierné

Materiál: Cu
Povrchová úprava: pocínované
Prevedenie: DIN 46235 (lisov. časť)



Tovar
na objednávku

| TYP | Prierez (mm ²) | Otvor pre skrutku | Rozmery (mm) | | | | | | Počet lisov | | Číslo hniezda | Balenie (ks) | Číslo produktu |
|-----------------|----------------------------|-------------------|--------------|------|-----|-----|----|----|-------------|--------|---------------|--------------|----------------|
| | | | d | D | a | E | C | W | úzke | široké | | | |
| KDR 10/2x6 | 10 | M6 | 4,5 | 6,0 | 12 | 27 | 30 | 9 | 1 | 1 | 6 | 1 | 4.0214756 |
| KDR 16/2x8 | 16 | M8 | 5,5 | 8,5 | 20 | 36 | 30 | 13 | 2 | 1 | 8 | 1 | 4.0214766 |
| KDR 25/2x10 | 25 | M10 | 7,0 | 10,0 | 20 | 38 | 30 | 17 | 2 | 1 | 10 | 1 | 4.0214786 |
| KDR 35/2x10 | 35 | M10 | 8,2 | 12,5 | 20 | 42 | 30 | 19 | 2 | 1 | 12 | 1 | 4.0214796 |
| KDR 50/2x10 | 50 | M10 | 10,0 | 14,5 | 28 | 52 | 30 | 20 | 3 | 2 | 14 | 1 | 4.0214806 |
| KDR 50/2x12 | 50 | M12 | 10,0 | 14,5 | 28 | 52 | 30 | 20 | 3 | 2 | 14 | 1 | 4.0214816 |
| KDR 70/2x10 | 70 | M10 | 11,5 | 16,5 | 28 | 55 | 40 | 24 | 3 | 2 | 16 | 1 | 4.0214826 |
| KDR 70/2x12 | 70 | M12 | 11,5 | 16,5 | 28 | 55 | 40 | 24 | 3 | 2 | 16 | 1 | 4.0214836 |
| KDR 95/2x12 | 95 | M12 | 13,5 | 19,0 | 35 | 65 | 40 | 28 | 4 | 2 | 18 | 1 | 4.0214856 |
| KDR 120/2x12 | 120 | M12 | 15,5 | 21,0 | 35 | 70 | 40 | 32 | 4 | 2 | 20 | 1 | 4.0214866 |
| KDR 150/2x12 | 150 | M12 | 17,0 | 23,5 | 40 | 78 | 40 | 34 | 4 | 2 | 22 | 1 | 4.0214886 |
| KDR 185/2x12 | 185 | M12 | 19,0 | 25,5 | 42 | 82 | 40 | 37 | 5 | 2 | 25 | 1 | 4.0214896 |
| KDR 240/2x16 | 240 | M16 | 21,5 | 29,0 | 42 | 92 | 40 | 42 | - | 2 | 28 | 1 | 4.0214906 |
| KDR 300/2x16 | 300 | M16 | 24,5 | 32,0 | 50 | 104 | 40 | 45 | - | 2 | 32 | 1 | 4.0214916 |
| KDR 400/2x16 | 400 | M16 | 22,5 | 38,5 | 70 | 115 | 40 | 55 | - | 3 | 38 | 1 | 4.0214926 |
| KDR 400/2x16-50 | 400 | M16 | 27,5 | 38,5 | 70 | 115 | 50 | 55 | - | 3 | 38 | 1 | 4.0214927 |
| KDR 500/2x16 | 500 | M16 | 31,0 | 42,0 | 70 | 125 | 40 | 60 | - | 3 | 42 | 1 | 4.0214936 |
| KDR 500/2x16-50 | 500 | M16 | 31,0 | 42,0 | 70 | 125 | 50 | 60 | - | 3 | 42 | 1 | 4.0214937 |
| KDR 625/2x16 | 625 | M16 | 34,5 | 44,0 | 80 | 135 | 40 | 60 | - | 3 | 44 | 1 | 4.0214946 |
| KDR 800/2x16 | 625 | M16 | 40,0 | 52,0 | 100 | 165 | 40 | 75 | - | 3 | 52 | 1 | 4.0214956 |
| KDR 1000/2x16 | 1000 | M16 | 44,0 | 58,0 | 100 | 165 | 40 | 85 | - | 3 | 58 | 1 | 4.0214966 |

Sektorové vodiče musia byť preformátované na kruhovú.

179

euro B. A. CH s.r.o.

euroB.A.CH s.r.o., Oščadnica 72, 023 01 Oščadnica, SLOVENSKO
 tel.: +421 414 332 332, e-mail: info@eurobach.sk, www.eurobach.sk