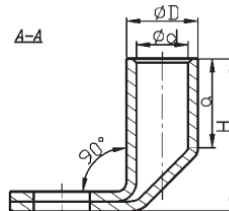
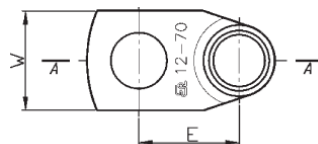


# Cu KONCOVKY RÚRKOVÉ

## K90R - oko rúrkové vyhnuté 90° (150-300mm<sup>2</sup>)

**Materiál:** Cu  
**Povrchová úprava:** pocínované  
**Prevedenie:** štandard  
**Norma:** certifikát UL: E475284



Tovar  
na objednávku

| TYP         | Prierez (mm <sup>2</sup> ) | Otvor pre skrutku | Rozmery (mm) |      |    |      |    |    | Počet lisov |        | Číslo hniezda | Balenie (ks) | Číslo produktu |
|-------------|----------------------------|-------------------|--------------|------|----|------|----|----|-------------|--------|---------------|--------------|----------------|
|             |                            |                   | d            | D    | a  | E    | W  | H  | úzke        | široké |               |              |                |
| K90R 150/10 | 150                        | M10               | 16,5         | 21,0 | 30 | 27,5 | 31 | 41 | 2           | 1      | 20            | 10           | 4.0214560      |
| K90R 150/12 | 150                        | M12               | 16,5         | 21,0 | 30 | 28,5 | 31 | 41 | 2           | 1      | 20            | 10           | 4.0214570      |
| K90R 150/16 | 150                        | M16               | 16,5         | 21,0 | 30 | 32,5 | 31 | 41 | 2           | 1      | 20            | 10           | 4.0214580      |
| K90R 150/20 | 150                        | M20               | 16,5         | 21,0 | 30 | 34,5 | 36 | 41 | 2           | 1      | 20            | 10           | 4.0214590      |
| K90R 185/12 | 185                        | M12               | 19,0         | 24,0 | 32 | 34,0 | 35 | 46 | 4           | 2      | 23            | 10           | 4.0214600      |
| K90R 185/16 | 185                        | M16               | 19,0         | 24,0 | 32 | 34,0 | 35 | 46 | 4           | 2      | 23            | 10           | 4.0214610      |
| K90R 185/20 | 185                        | M20               | 19,0         | 24,0 | 32 | 36,0 | 38 | 46 | 4           | 2      | 23            | 10           | 4.0214620      |
| K90R 240/12 | 240                        | M12               | 21,0         | 26,0 | 38 | 35,0 | 38 | 53 | 4           | 2      | 25            | 10           | 4.0214630      |
| K90R 240/16 | 240                        | M16               | 21,0         | 26,0 | 38 | 35,0 | 38 | 53 | 4           | 2      | 25            | 10           | 4.0214640      |
| K90R 240/20 | 240                        | M20               | 21,0         | 26,0 | 38 | 37,0 | 38 | 53 | 4           | 2      | 25            | 10           | 4.0214650      |
| K90R 300/12 | 300                        | M12               | 24,0         | 30,0 | 44 | 38,8 | 43 | 60 | -           | 2      | 28            | 10           | 4.0214660      |
| K90R 300/16 | 300                        | M16               | 24,0         | 30,0 | 44 | 38,8 | 43 | 60 | -           | 2      | 28            | 10           | 4.0214670      |
| K90R 300/20 | 300                        | M20               | 24,0         | 30,0 | 44 | 38,8 | 43 | 60 | -           | 2      | 28            | 10           | 4.0214680      |

Sektorové vodiče musia byť preformátované na kruhové.

165

euro B. A. CH s.r.o.

euroB.A.CH s.r.o., Oščadnica 72, 023 01 Oščadnica, SLOVENSKO  
 tel.: +421 414 332 332, e-mail: info@eurobach.sk, www.eurobach.sk