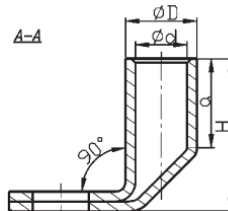
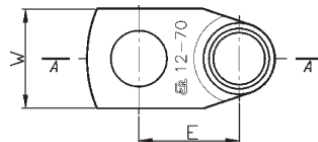


Cu KONCOVKY RÚRKOVÉ

K90R - oko rúrkové vyhnuté 90° (6-120mm²)

Materiál: Cu
Povrchová úprava: pocínované
Prevedenie: štandard
Norma: certifikát UL: E475284



Tovar
na objednávku

TYP	Prierez (mm ²)	Otvor pre skrutku	Rozmery (mm)						Počet lisov		Číslo hniezda	Balenie (ks)	Číslo produktu
			d	D	a	E	W	H	úzke	široké			
K90R 10/5	10	M5	4,5	7,0	10	13,5	12	15	1	1	7	10	4.0214200
K90R 10/6	10	M6	4,5	7,0	10	13,5	12	15	1	1	7	10	4.0214210
K90R 10/8	10	M8	4,5	7,0	10	16,5	15	15	1	1	7	10	4.0214220
K90R 10/10	10	M10	4,5	7,0	10	18,5	17	15	1	1	7	10	4.0214230
K90R 10/12	10	M12	4,5	7,0	10	18,5	19	15	1	1	7	10	4.0214240
K90R 16/6	16	M6	5,5	8,5	13	14,2	12	20	2	1	8	10	4.0214250
K90R 16/8	16	M8	5,5	8,5	13	17,2	15	20	2	1	8	10	4.0214260
K90R 16/10	16	M10	5,5	8,5	13	19,2	17	20	2	1	8	10	4.0214270
K90R 16/12	16	M12	5,5	8,5	13	19,2	19	20	2	1	8	10	4.0214280
K90R 25/6	25	M6	7,0	10,0	15	15,0	14	23,5	2	1	10	10	4.0214290
K90R 25/8	25	M8	7,0	10,0	15	18,0	16	23,5	2	1	10	10	4.0214300
K90R 25/10	25	M10	7,0	10,0	15	20,0	18	23,5	2	1	10	10	4.0214310
K90R 25/12	25	M12	7,0	10,0	15	20,0	19	23,5	2	1	10	10	4.0214320
K90R 35/6	35	M6	8,5	12,0	17	16,0	18	27	2	1	12	10	4.0214330
K90R 35/8	35	M8	8,5	12,0	17	19,0	18	27	2	1	12	10	4.0214340
K90R 35/10	35	M10	8,5	12,0	17	21,0	18	27	2	1	12	10	4.0214350
K90R 35/12	35	M12	8,5	12,0	17	21,0	20	27	2	1	12	10	4.0214360
K90R 50/6	50	M6	10,0	14,0	19	17,0	20	31	2	1	14	10	4.0214370
K90R 50/8	50	M8	10,0	14,0	19	20,0	20	31	2	1	14	10	4.0214380
K90R 50/10	50	M10	10,0	14,0	19	22,0	20	31	2	1	14	10	4.0214390
K90R 50/12	50	M12	10,0	14,0	19	22,0	23	31	2	1	14	10	4.0214400
K90R 50/16	50	M16	10,0	14,0	19	25,0	28	31	2	1	14	10	4.0214410
K90R 70/6	70	M6	12,0	16,5	21	18,2	23	35	2	1	16	10	4.0214420
K90R 70/8	70	M8	12,0	16,5	21	21,2	23	35	2	1	16	10	4.0214430
K90R 70/10	70	M10	12,0	16,5	21	23,2	23	35	2	1	16	10	4.0214440
K90R 70/12	70	M12	12,0	16,5	21	23,2	23	35	2	1	16	10	4.0214450
K90R 70/16	70	M16	12,0	16,5	21	26,2	28	35	2	1	16	10	4.0214460
K90R 95/8	95	M8	13,5	18,0	24	25,0	26	37	2	1	17	10	4.0214470
K90R 95/10	95	M10	13,5	18,0	24	26,0	26	37	2	1	17	10	4.0214480
K90R 95/12	95	M12	13,5	18,0	24	27,0	26	37	2	1	17	10	4.0214490
K90R 95/16	95	M16	13,5	18,0	24	31,0	29	37	2	1	17	10	4.0214500
K90R 95/20	95	M20	13,5	18,0	24	33,0	35	37	2	1	17	10	4.0214510
K90R 120/8	120	M8	15,0	19,5	26	25,7	29	43	2	1	19	10	4.0214515
K90R 120/10	120	M10	15,0	19,5	26	26,7	29	43	2	1	19	10	4.0214520
K90R 120/12	120	M12	15,0	19,5	26	27,7	29	43	2	1	19	10	4.0214530
K90R 120/16	120	M16	15,0	19,5	26	31,7	29	43	2	1	19	10	4.0214540
K90R 120/20	120	M20	15,0	19,5	26	33,7	35	43	2	1	19	10	4.0214550

Sektorové vodiče musia byť preformátované na kruhovú.

164