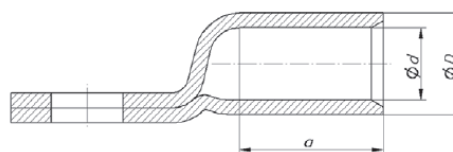
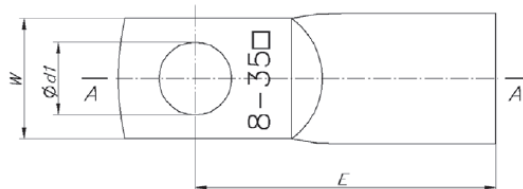


Cu KONCOVKY RÚRKOVÉ

KORW - oko rúrkové zúžené

Materiál: Cu
 Povrchová úprava: pocínované
 Prevedenie: štandard



Tovar
na objednávku

| TYP | Prierez (mm ²) | Otvor pre skrutku | Rozmery (mm) | | | | | | Počet lisov | | Číslo hniezda | Balenie (ks) | Číslo produktu |
|-------------|----------------------------|-------------------|--------------|------|----------------|----|------|----|-------------|--------|---------------|--------------|----------------|
| | | | d | D | d ₁ | a | E | W | úzke | široké | | | |
| KORW 25/6 | 25 | M6 | 7,0 | 10,0 | 6,5 | 15 | 29,5 | 10 | 2 | 1 | 10 | 10 | 4.0211305 |
| KORW 35/6 | 35 | M6 | 8,5 | 12,0 | 6,5 | 17 | 33 | 15 | 2 | 1 | 12 | 10 | 4.0211355 |
| KORW 35/8 | 35 | M8 | 8,5 | 12,0 | 8,5 | 17 | 35 | 15 | 2 | 1 | 12 | 10 | 4.0211365 |
| KORW 50/6 | 50 | M6 | 10,0 | 14,0 | 6,5 | 19 | 37 | 17 | 2 | 1 | 14 | 10 | 4.0211415 |
| KORW 50/8 | 50 | M8 | 10,0 | 14,0 | 8,5 | 19 | 39 | 17 | 2 | 1 | 14 | 10 | 4.0211425 |
| KORW 50/10 | 50 | M10 | 10,0 | 14,0 | 10,5 | 19 | 41 | 17 | 2 | 1 | 14 | 10 | 4.0211435 |
| KORW 70/6 | 70 | M6 | 12,0 | 16,5 | 6,5 | 21 | 41 | 17 | 2 | 1 | 16 | 10 | 4.0211485 |
| KORW 70/8 | 70 | M8 | 12,0 | 16,5 | 8,5 | 21 | 43 | 17 | 2 | 1 | 16 | 10 | 4.0211495 |
| KORW 70/10 | 70 | M10 | 12,0 | 16,5 | 10,5 | 21 | 45 | 17 | 2 | 1 | 16 | 10 | 4.0211505 |
| KORW 70/12 | 70 | M12 | 12,0 | 16,5 | 13,0 | 21 | 46 | 19 | 2 | 1 | 16 | 10 | 4.0211515 |
| KORW 95/6 | 95 | M6 | 13,5 | 18,0 | 6,5 | 23 | 43 | 19 | 2 | 1 | 17 | 10 | 4.0211549 |
| KORW 95/8 | 95 | M8 | 13,5 | 18,0 | 8,5 | 23 | 45 | 19 | 2 | 1 | 17 | 10 | 4.0211555 |
| KORW 95/10 | 95 | M10 | 13,5 | 18,0 | 10,5 | 23 | 47 | 19 | 2 | 1 | 17 | 10 | 4.0211565 |
| KORW 95/12 | 95 | M12 | 13,5 | 18,0 | 13,0 | 23 | 48 | 19 | 2 | 1 | 17 | 10 | 4.0211575 |
| KORW 120/6 | 120 | M6 | 15,0 | 19,5 | 6,5 | 26 | 49 | 20 | 2 | 1 | 19 | 10 | 4.0211609 |
| KORW 120/8 | 120 | M8 | 15,0 | 19,5 | 8,5 | 26 | 51 | 20 | 2 | 1 | 19 | 10 | 4.0211615 |
| KORW 120/10 | 120 | M10 | 15,0 | 19,5 | 10,5 | 26 | 53 | 20 | 2 | 1 | 19 | 10 | 4.0211625 |
| KORW 120/12 | 120 | M12 | 15,0 | 19,5 | 13,0 | 26 | 54 | 20 | 2 | 1 | 19 | 10 | 4.0211635 |
| KORW 150/6 | 150 | M6 | 16,5 | 21,0 | 6,5 | | 52 | 20 | 4 | 2 | 20 | 10 | 4.0211669 |
| KORW 150/8 | 150 | M8 | 16,5 | 21,0 | 8,5 | 29 | 54 | 20 | 4 | 2 | 20 | 10 | 4.0211666 |
| KORW 150/10 | 150 | M10 | 16,5 | 21,0 | 10,5 | 29 | 56 | 20 | 4 | 2 | 20 | 10 | 4.0211675 |
| KORW 150/12 | 150 | M12 | 16,5 | 21,0 | 13,0 | 29 | 57 | 20 | 4 | 2 | 20 | 10 | 4.0211685 |
| KORW 185/8 | 185 | M8 | 19,0 | 24,0 | 8,5 | 30 | 58 | 26 | 4 | 2 | 23 | 10 | 4.0211719 |
| KORW 185/10 | 185 | M10 | 19,0 | 24,0 | 10,5 | 30 | 60 | 26 | 4 | 2 | 23 | 10 | 4.0211725 |
| KORW 185/12 | 185 | M12 | 19,0 | 24,0 | 13,0 | 30 | 60 | 26 | 4 | 2 | 23 | 10 | 4.0211735 |
| KORW 185/16 | 185 | M16 | 19,0 | 24,0 | 17,0 | 30 | 64 | 26 | 4 | 2 | 23 | 10 | 4.0211755 |
| KORW 240/8 | 240 | M8 | 21,0 | 26,0 | 8,5 | 35 | 63 | 30 | 4 | 2 | 25 | 10 | 4.0211769 |
| KORW 240/10 | 240 | M10 | 21,0 | 26,0 | 10,5 | 35 | 65 | 30 | 4 | 2 | 25 | 10 | 4.0211775 |
| KORW 240/12 | 240 | M12 | 21,0 | 26,0 | 13,0 | 35 | 65 | 30 | 4 | 2 | 25 | 10 | 4.0211785 |
| KORW 240/16 | 240 | M16 | 21,0 | 26,0 | 17,0 | 35 | 69 | 30 | 4 | 2 | 25 | 10 | 4.0211805 |
| KORW 300/10 | 300 | M10 | 24,0 | 30,0 | 10,5 | 42 | 76 | 30 | - | 2 | 28 | 10 | 4.0211825 |
| KORW 300/12 | 300 | M12 | 24,0 | 30,0 | 13,0 | 42 | 79 | 30 | - | 2 | 28 | 10 | 4.0211835 |
| KORW 300/16 | 300 | M16 | 24,0 | 30,0 | 17,0 | 42 | 81 | 30 | - | 2 | 28 | 10 | 4.0211855 |

Sektorové vodiče musia byť preformátované na kruhové.