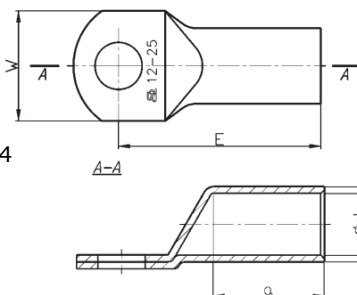


Cu koncovky rúrkové

KOR - oko rúrkové (70-625mm²)

Materiál: Cu
Povrchová úprava: pocínované
Prevedenie: štandard
Norma: certifikát UL: E475284



TYP	Prierez (mm ²)	Otvor pre skrutku	Rozmery (mm)					Počet lisov		Číslo hniezda	Balenie (ks)	Číslo produktu
			d	D	a	E	W	úzke	široké			
KOR 70/6	70	M6	12,0	16,5	21	40,5	23	2	1	16	1	4.0211480
KOR 70/8	70	M8	12,0	16,5	21	40,5	23	2	1	16	1	4.0211490
KOR 70/10	70	M10	12,0	16,5	21	43,5	23	2	1	16	1	4.0211500
KOR 70/12	70	M12	12,0	16,5	21	43,5	23	2	1	16	1	4.0211510
KOR 70/16	70	M16	12,0	16,5	21	46,5	28	2	1	16	1	4.0211530
KOR 70/20	70	M20	12,0	16,5	21	51,0	31	2	1	16	1	4.0211540
KOR 95/8	95	M8	13,5	18,0	24	47,0	25	2	1	17	1	4.0211550
KOR 95/10	95	M10	13,5	18,0	24	47,0	25	2	1	17	1	4.0211560
KOR 95/12	95	M12	13,5	18,0	24	47,0	25	2	1	17	1	4.0211570
KOR 95/16	95	M16	13,5	18,0	24	50,0	29	2	1	17	1	4.0211590
KOR 95/20	95	M20	13,5	18,0	24	54,5	35	2	1	17	1	4.0211600
KOR 120/8	120	M8	15,0	19,5	26	50,0	29	2	1	19	1	4.0211610
KOR 120/10	120	M10	15,0	19,5	26	50,0	29	2	1	19	1	4.0211620
KOR 120/12	120	M12	15,0	19,5	26	50,0	29	2	1	19	1	4.0211630
KOR 120/16	120	M16	15,0	19,5	26	53,0	29	2	1	19	1	4.0211650
KOR 120/20	120	M20	15,0	19,5	26	57,5	35	2	1	19	1	4.0211660
KOR 150/8	150	M8	16,5	21,0	29	54,0	31	4	2	20	1	4.0211661
KOR 150/10	150	M10	16,5	21,0	29	54,0	31	4	2	20	1	4.0211670
KOR 150/12	150	M12	16,5	21,0	29	54,0	31	4	2	20	1	4.0211680
KOR 150/16	150	M16	16,5	21,0	29	57,0	31	4	2	20	1	4.0211700
KOR 150/20	150	M20	16,5	21,0	29	61,5	35	4	2	20	1	4.0211710
KOR 185/10	185	M10	19,0	24,0	30	56,5	35	4	2	23	1	4.0211720
KOR 185/12	185	M12	19,0	24,0	30	56,5	35	4	2	23	1	4.0211730
KOR 185/16	185	M16	19,0	24,0	30	59,5	35	4	2	23	1	4.0211750
KOR 185/20	185	M20	19,0	24,0	30	64,0	38	4	2	23	1	4.0211760
KOR 240/10	240	M10	21,0	26,0	38	73,5	38	4	2	25	1	4.0211770
KOR 240/12	240	M12	21,0	26,0	38	73,5	38	4	2	25	1	4.0211780
KOR 240/16	240	M16	21,0	26,0	38	73,5	38	4	2	25	1	4.0211800
KOR 240/20	240	M20	21,0	26,0	38	73,5	38	4	2	25	1	4.0211810
KOR 300/10	300	M10	24,0	30,0	45	82,5	43	-	2	28	1	4.0211820
KOR 300/12	300	M12	24,0	30,0	45	82,5	43	-	2	28	1	4.0211830
KOR 300/16	300	M16	24,0	30,0	45	82,5	43	-	2	28	1	4.0211850
KOR 300/20	300	M20	24,0	30,0	45	82,5	43	-	2	28	1	4.0211860
KOR 400/12	400	M12	27,5	33,5	50	90,0	49	-	2	32	1	4.0211870
KOR 400/16	400	M16	27,5	33,5	50	90,0	49	-	2	32	1	4.0211890
KOR 400/20	400	M20	27,5	33,5	50	90,0	49	-	2	32	1	4.0211900
KOR 500/12	500	M12	31	38,0	70	112,5	55	-	3	36	1	4.0211910
KOR 500/16	500	M16	31	38,0	70	112,5	55	-	3	36	1	4.0211920
KOR 500/20	500	M20	31	38,0	70	112,5	55	-	3	36	1	4.0211930
KOR 625/12	625	M12	34	40,0	70	114,0	60	-	3	38	1	4.0211940
KOR 625/16	625	M16	34	40,0	70	114,0	60	-	3	38	1	4.0211950
KOR 625/20	625	M20	34	40,0	70	114,0	60	-	3	38	1	4.0211960

Prevedenie bez pocínovania má v typovom označení namiesto KOR označenie KM. Sektorové vodiče musia byť preformátované na kruhové.